

Digital Metering

New Features and Product Development

John Straughn

October 23, 2009

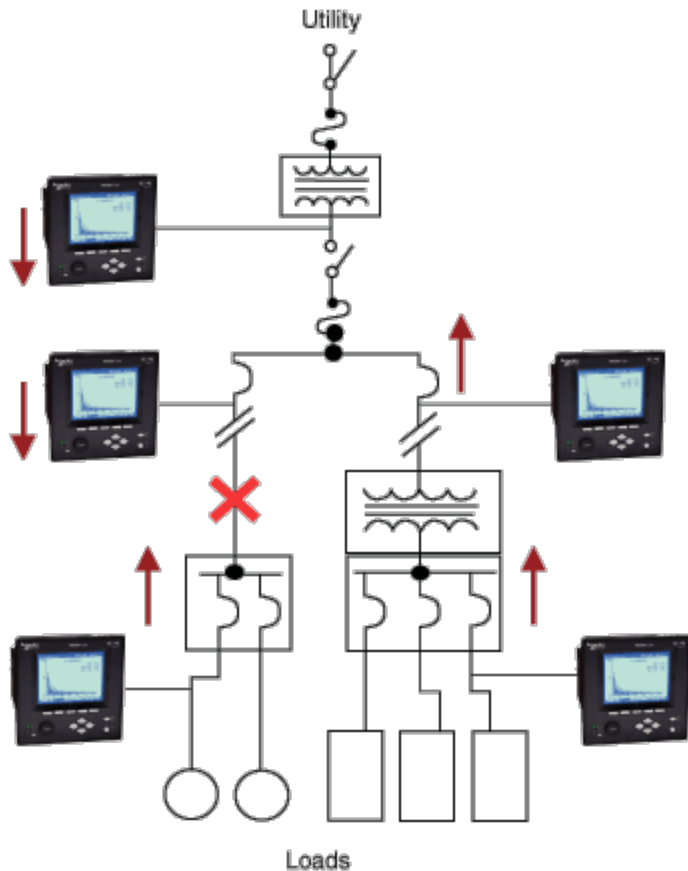


Setpoint Learning Functionality

These meters can set themselves!

- ION7x50 meters can learn the normal characteristics of your system and recommend the settings for high and low setpoints and what constitutes a sag, swell, or transient.
 - Minimize nuisance alarms
 - Capture the appropriate disturbances
- Learning can be setup in either ION Setup or ION Enterprise software.
 - The length of time used to analyze the system is adjustable up to 365 days, but the default is 30 days.
- There are 2 modes of implementation after the learning period is completed:
 - Automatic: The suggested settings are automatically incorporated
 - Manual: The suggested settings are saved for review, and you manually install them

Disturbance Direction Detection



- Determine the location of a disturbance relative to the meter.
- Analyzing disturbance direction detection information from multiple meters in a power monitoring system enables the location of the cause of the disturbance to be determined more quickly and accurately.
- The ION Disturbance Direction Detection module was created for this application and launched in v350 firmware for ION7x50 meters

Scaled Operational Values

- In Ontario, ION8600 meters are sealed with secondary values only.
- Users can now set up independent CT & PT ratios for operational values without affecting protected revenue parameters.
- Operational values are voltage, power, current, power quality parameters, etc
- ION Enterprise is used to implement this feature

Now I want to hear from you!

- What other features are you looking in a high-end meter?
- This is your opportunity to provide direct input as to what you want in a meter!